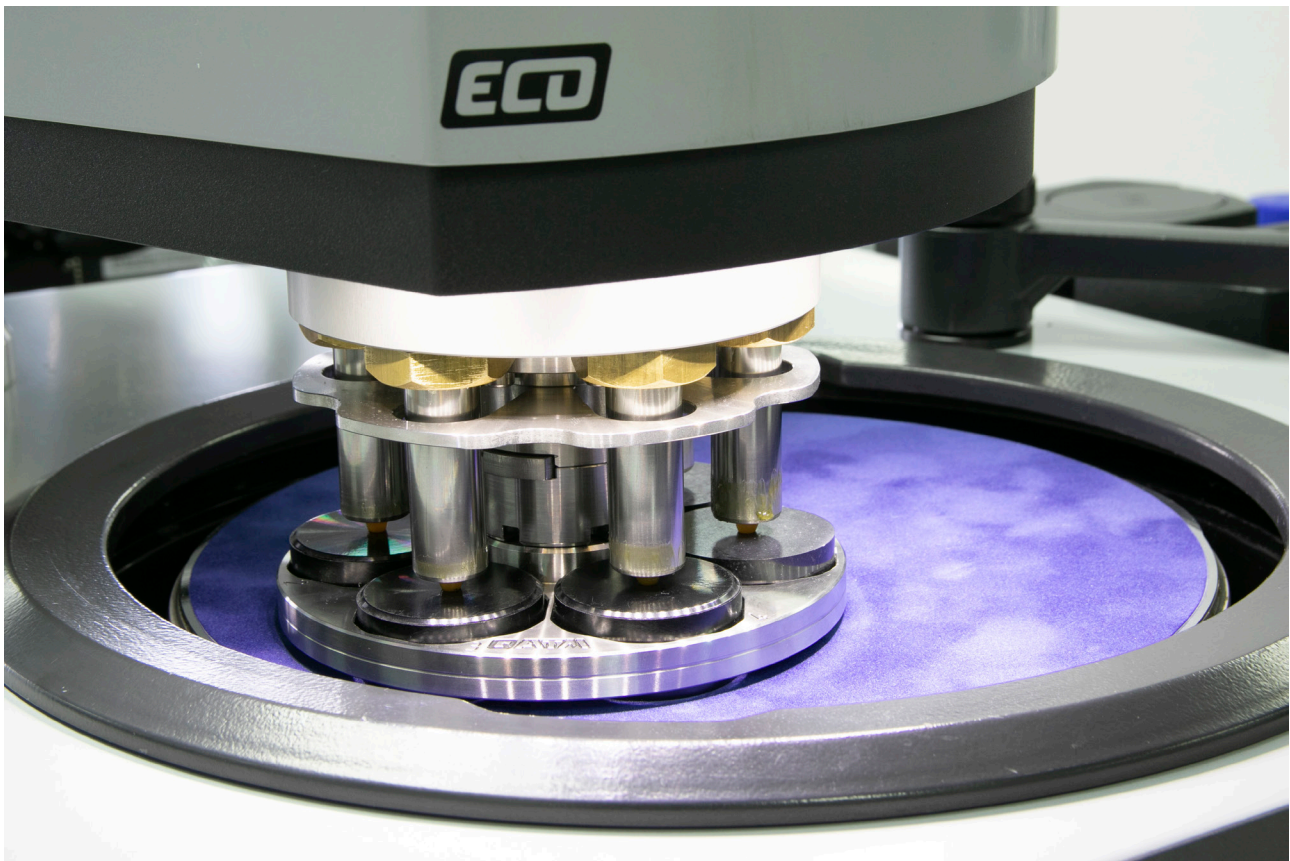


# SAMPLE HOLDERS

WHICH SAMPLE HOLDER FITS WHICH DEVICE?		
DEVICE	SINGLE PRESSURE	CENTRAL PRESSURE
Saphir 550 / 560	see page 3.62	Sample holder <b>L</b>
Qpol GO	Sample holder <b>S</b>	-
Qpol ECO (as of 2022, 6x Ø 40 mm)	Sample holder <b>M</b>	Sample holder <b>M</b>
Qpol ECO+ (max. Ø 185 mm)	Sample holder <b>L</b>	Sample holder <b>L</b>
Qpol XL	-	Sample holder <b>L</b>
Qgrind XL	-	Sample holder <b>L</b>
Qpol 250 BOT (max. Ø 160 mm)	-	Sample holder <b>L</b>
Qpol 300 BOT	-	on request
DISCONTINUED DEVICE	SINGLE PRESSURE	CENTRAL PRESSURE
Saphir 520 / 530	on request	Sample holder <b>M</b>
Saphir 375	-	Sample holder <b>L</b>
Qpol ECO (until 2021, 5x Ø 40 mm)	on request	Sample holder <b>M</b>



**SINGLE PRESSURE (FOR QPOL DEVICES)**

- | made of stainless steel
- | incl. adaption

**SAMPLE HOLDER S**  
for polishing head GO


| Dimensions Ø 120 mm

Size	Order No.:
4x Ø 25 mm	<b>Z5450001</b>
4x Ø 30 mm	<b>Z5450003</b>
4x Ø 40 mm	<b>Z5450008</b>
4x Ø 1"	<b>Z5450002</b>
4x Ø 1 1/4"	<b>Z5450004</b>
4x Ø 1 1/2"	<b>Z5450007</b>

**SAMPLE HOLDER M**  
for polishing head ECO


| Dimensions Ø 130 mm

Size	Order No.:
6x Ø 25 mm	<b>Z5445020</b>
6x Ø 30 mm	<b>Z5445022</b>
6x Ø 40 mm	<b>Z5445025</b>
6x Ø 1"	<b>Z5445021</b>
6x Ø 1 1/4"	<b>Z5445023</b>
6x Ø 1 1/2"	<b>Z5445024</b>
3x 55 x 30 mm	<b>Z5445026</b>

**SAMPLE HOLDER L**  
for polishing head ECO+


| Dimensions Ø 160 mm

Size	Order No.:
6x Ø 25 mm	<b>Z5446020</b>
6x Ø 30 mm	<b>Z5446022</b>
6x Ø 40 mm	<b>Z5446025</b>
6x Ø 50 mm	<b>Z5446026</b>
6x Ø 1"	<b>Z5446021</b>
6x Ø 1 1/4"	<b>Z5446023</b>
6x Ø 1 1/2"	<b>Z5446024</b>
6x Ø 2"	<b>Z5446027</b>
3x 55 x 30 mm	<b>Z5446028</b>
3x 60 x 40 mm	<b>Z5446029</b>



Insert suitable distance rings

**ACCESSORIES**

- | made of stainless steel

**DISTANCE RINGS M**  
for polishing head ECO

1 set	6 pcs. / Ø
<b>for sample holder 6x Ø 40 mm</b>	
Size	Order No.:
Ø 25 mm	<b>05445011</b>
Ø 30 mm	<b>05445010</b>

<b>for sample holder 6x Ø 1 1/2"</b>	
Ø 1"	<b>05445013</b>
Ø 1 1/4"	<b>05445012</b>

**DISTANCE RINGS L**  
for polishing head ECO+

1 set	6 pcs. / Ø
<b>for sample holder 6x Ø 50 mm</b>	
Size	Order No.:
Ø 25 mm	<b>05446012</b>
Ø 30 mm	<b>05446011</b>
Ø 40 mm	<b>05446010</b>
<b>for sample holder 6x Ø 2"</b>	
Ø 1"	<b>05446015</b>
Ø 1 1/4"	<b>05446014</b>
Ø 1 1/2"	<b>05446013</b>

**SINGLE PRESSURE (FOR SAPHIR 550/560)**

- | incl. adaption

**SAMPLE HOLDER**

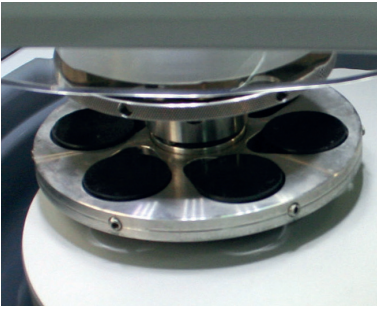

| Dimensions Ø 160 mm

Size	Order No.:
6x Ø 50 mm	<b>Z5400087</b>

**DISTANCE RINGS**

1 set	6 pcs. / Ø
Size	Order No.:
Ø 25 mm	<b>05400086</b>
Ø 30 mm	<b>05400085</b>
Ø 32 mm	<b>05400084</b>
Ø 40 mm	<b>05400082</b>

1 set	6 pcs. / Ø
Size	Order No.:
Ø 1"	<b>05440138</b>
Ø 1 1/4"	<b>05440139</b>
Ø 1 1/2"	<b>05400083</b>



Central pressure requires levelled samples

### CENTRAL PRESSURE

**SAMPLE HOLDER M (TEAR SHAPE)**  
for polishing head ECO



| made of stainless steel

Samples 5x Ø 20-40 mm  
Dimensions Ø 130 mm

**Order No.: Z5445036**

**SAMPLE HOLDER L (TEAR SHAPE)**  
for polishing head ECO+,  
Qpol 250 BOT, Qpol XL,  
Saphir 550/560



| incl. adaption

Samples 6x Ø 20-40 mm  
Dimensions Ø 160 mm

**Order No.: Z5446038**

### CENTRAL PRESSURE

**SAMPLE HOLDER M (3-POINT-FIXATION)**  
for polishing head ECO



| especially suitable for hot mounted samples  
| made of stainless steel

Size	Order No.:	Dimensions
8x Ø 25 mm	<b>Z5445030</b>	Ø 130 mm
8x Ø 30 mm	<b>Z5445031</b>	Ø 130 mm
5x Ø 40 mm	<b>Z5445034</b>	Ø 130 mm
8 x Ø 1"	<b>Z5445030</b>	Ø 130 mm
8 x Ø 1 1/4"	<b>Z5445032</b>	Ø 130 mm
6 x Ø 1 1/2"	<b>Z5445033</b>	Ø 130 mm
3x 55 x 30 mm	<b>Z5445035</b>	Ø 130 mm

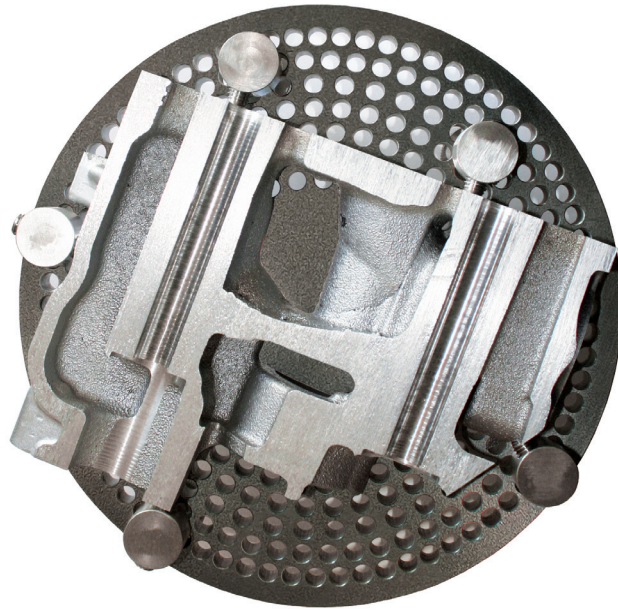
**SAMPLE HOLDER L (3-POINT-FIXATION)**  
for polishing head ECO+,  
Qpol 250 BOT, Qpol XL, Saphir 550/560



| incl. adaption

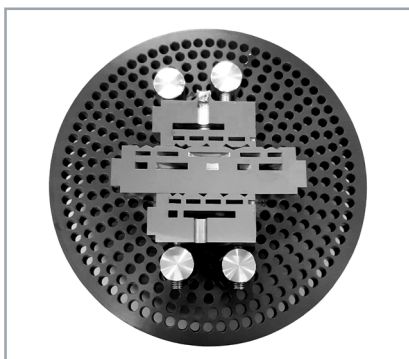
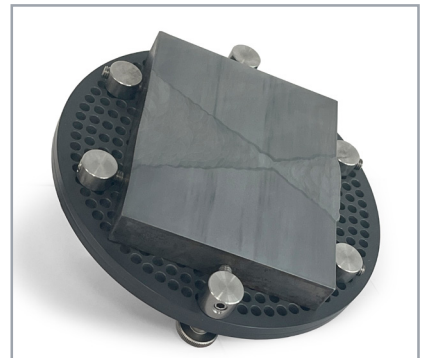
Size	Order No.:	Dimensions
12 x Ø 25 mm	<b>Z5446030</b>	Ø 160 mm
8 x Ø 30 mm	<b>Z5446031</b>	Ø 160 mm
6 x Ø 40 mm	<b>Z5446034</b>	Ø 160 mm
5 x Ø 50 mm	<b>Z5446035</b>	Ø 160 mm
3 x Ø 60 mm	<b>Z5446042</b>	Ø 185 mm
5 x Ø 70 mm	<b>Z5446044</b>	Ø 204 mm
12 x Ø 1"	<b>Z5446030</b>	Ø 160 mm
8 x Ø 1 1/4"	<b>Z5446032</b>	Ø 160 mm
6 x Ø 1 1/2"	<b>Z5446033</b>	Ø 160 mm
5 x Ø 2"	<b>Z5446035</b>	Ø 160 mm
3x 55 x 30 mm	<b>Z5446036</b>	Ø 160 mm
3x 60 x 40 mm	<b>Z5446037</b>	Ø 160 mm
3x 70 x 40 mm	<b>Z5446043</b>	Ø 185 mm
3x 100 x 50 mm	<b>Z5446045</b>	Ø 204 mm

# UNIVERSAL SAMPLE HOLDER FOR CENTRAL PRESSURE



Samples with big dimensions or complicated geometries which normally need manual preparation can be fixed with the universal sample holder for automatic grinding and polishing.

- | The sample holders are available in the fixture variants M and L
- | For fixing the sample on the sample holder you can choose between different clamping fixtures
- | Made of anodised aluminium



## UNIVERSAL SAMPLE HOLDER FOR CENTRAL PRESSURE

### TIPS FOR YOUR PRACTICE

- | The sample should be prepared as plane parallel as possible (max. difference 0.5-1 mm)
- | The sample should be as flat as possible (depending on clamping set min. 12, max. 20-25 mm)
- | The samples should have a minimum size to prevent the sample holder from tilting. This minimizes vibrations in the machine and unevenness on the preparation surface (empirical formula: outer sample diameter : sample height > 6:1)
- | The holder should be as small as possible, so the preparation takes place at the outer areas of the working wheel
- | Samples should lie flat - otherwise they can be supported by the supporting set.
- | Depending on the application and preparation parameters, high shear forces can occur during preparation. Sufficient fixation of the sample on the sample holder must be ensured.

### UNIVERSAL SAMPLE HOLDER

Dimensions	<b>Order No.:</b>
for fixture M	
Ø 140 mm	<b>Z5445037</b>
for fixture L	
Ø 160 mm	<b>Z5446039</b>
Ø 185 mm	<b>Z5446040</b>
Ø 204 mm	<b>Z5446041</b>



For the sample height the capacity of the grinding and polishing machine must be taken into account:

Device	Sample height
Qpol 250 ECO	10 - 15 mm
Qpol 300 ECO+	10 - 15 mm
Saphir 550/560	10 - 25 mm
Qpol/Qgrind XL	10 - 25 mm
Qpol 250 BOT	10 - 20 mm

### ACCESSORIES

#### SUPPORTING SET (1 PIECE)

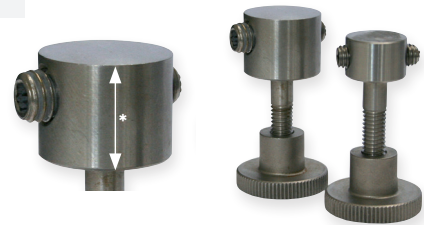
for supporting from 3 to 12 mm  
**Order No.: Z5440101**



#### CLAMPING SET (1 PIECE)

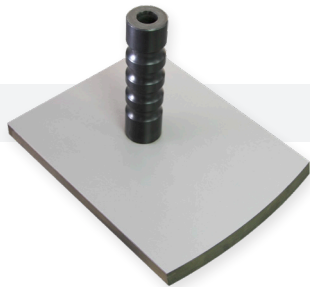
for individual lateral clamping of samples

Clamping set 1	clamping head height* 10 mm	<b>Order No.:</b>
Clamping set 2	clamping head height* 12 mm	<b>Z5440102</b>
Clamping set 3	clamping head height* 16 mm	<b>Z5440103</b>
		<b>Z5440104</b>

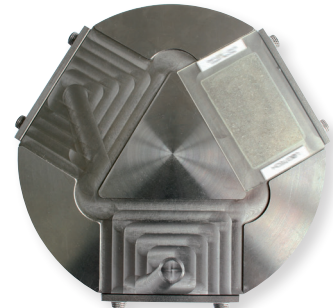
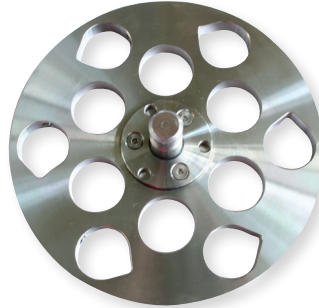


#### BASE STAND

for easy clamping of the sample on the sample holder  
**Order No.: Z5440092**



# SPECIAL SAMPLE HOLDERS



The problem of clamping samples with special dimensions can be solved with special sample holders.

